

Kaleidoscope II using Floral Fantasy fabrics

Supplemental directions for converting the Kaleidoscope quilt pattern printed in the October 2003 edition of *American Patchwork & Quilting* to Jane's Floral Fantasy fabric.

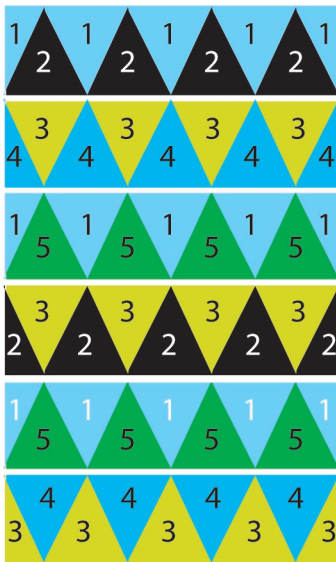
Yardages:

1. Nosegay (blue background) red/orange colorway—1-2/3 yard or 5 feet
2. Primrose (black background)purple/yellow colorway—1-1/3 yard or 4 feet
3. Wild Stripe in purple/yellow colorway—1-2/3 yard or 5 feet
4. Primrose (blue background) in red/orange colorway—1-2/3 yard or 5 feet
5. Hydrangea in red/orange colorway—1-2/3 yard or 5 feet
6. Lily & Crocus in purple/yellow colorway—2 yards or 6 feet
7. Diamond in red/orange colorway—1/3 yard

Changes & Recommendations:

Follow the pattern instructions that begin on page 41 of the AP&Q, but disregard the Quilt Assembly Diagram on page 42 and use the diagram below instead. The only change in the directions concern piecing the border; these instructions follow directly below:

The borders are made of 4.5 inch strips, cut from selvage to selvage. Line your ruler .5" below the base of the Lily stem for the bottom cut of all borders. (Use left over strips for your binding). Center a border strip along the top and bottom sides of your quilt (short sides). Cut border to size. The long borders are made by piecing two strips together. It is important that the repeat pattern remains the same. Lay the two strips right sides together so all Lily stems are exactly on top of each other. Lay your clear ruler on center of the outermost lily stem and mark the exact middle. Then cut through both strips .25" to the outside of your mark. This piecing line will be lined up with the center of the long sides of the quilt. There are no corner squares on the border, so attach these long strips all the way to the edge of your quilt



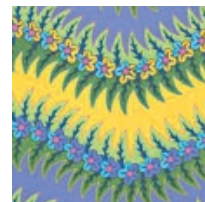
Quilt Assembly Diagram: fabric numbers and their placement



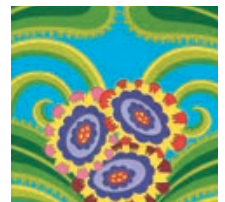
Fabric # 1:
Red & Orange
Nosegay -
1-2/3 yard



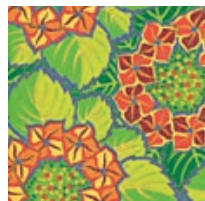
Fabric # 2:
Purple & Yellow
Primrose -
1-1/3 yards



Fabric # 3:
Purple & Yellow
Wild Stripe -
1-2/3 yards



Fabric # 4:
Red & Orange
Primrose -
1-2/3 yards



Fabric # 5:
Red & Orange
Hydrangea -
1-2/3 yard



Fabric # 6
Purple & Yellow
Lily & Crocus -
2 yards



Fabric # 7:
Red & Orange
Diamond -
1/3 yards